

# TOPODRONE

## AQUAMAPPER

This is the new standard for bathymetry and drone water surveys.



**AQUAMAPPER** is the new drone-based solution in the bathymetric survey and marine construction, it is a unique multitasking platform specially designed for a wide range of applications in the maritime branch and other water sources. This product provides a great combination of high speed efficiency and accuracy, successfully challenging conventional methods such as boats and providing obvious profit as a cost-effective and easy-for-use solution.

### Features




- High survey speed up to 14 km/h
- Centimeter level accuracy
- Cheap and effective solution for marine survey
- Easy planning and autonomic mission
- Quick deploy, ready for use in 10 minutes
- Ability to work in hard access and shallow water areas
- Ability to use different sensors for any survey mission
- Ability to combine data with LIDAR data
- PPK ready solution
- Compatible with DJI Matrice 300 RTK



## General specifications

|                             |                                |                                  |   |
|-----------------------------|--------------------------------|----------------------------------|---|
| Country of origin           | Switzerland                    | BeiDou support                   | B1I, B2I                                |
| Warranty                    | 12 month                       | Galileo support                  | E1B/C, E5b                              |
| Wight                       | 2.5 kg                         | SBAS support                     | L1C/A                                   |
| Diensions                   | 16.6 x 51.8 x 23               | QZSS support                     | L1C/A, L1S, L2C                         |
| Operating temperature range | m-10 ... +50 °C                | Working without reference points | Yes                                     |
| GNSS                        |                                | Bathymetry                       |   |
| Repetition rate (ping)      | 10 Hz                          | Temperature accuracy             | 0.5 °C                                  |
| Receiver type               | PPK                            | Operational crusing speed        | up to 12 km/h                           |
| Number of channels          | 184                            | Depth measurement range          | up to 100 m                             |
| Frequency                   | 10 Hz                          | Device immersion depth           | -0.2 ... -0.4                           |
| Accuracy                    | up to 5 cm XYZ                 | Acoustic frequency               | m450 kHz                                |
| GPS suport                  | L1C/A, L2C                     | Beam width                       | 5° Conical (-3dB)                       |
| GLONASS support             | L1OF, L2OF                     | Stabilization                    | 2-axis, +- 90°                          |
| Transmit pulsewidth         | 10 ... 200 msec (10 msec step) | Data output format               | ASCII TXT, NMEA0183<br>*or user defined |

### CONTACTS

 +41 21 588 02 11  
 info@topodrone.com  
 topodrone.com

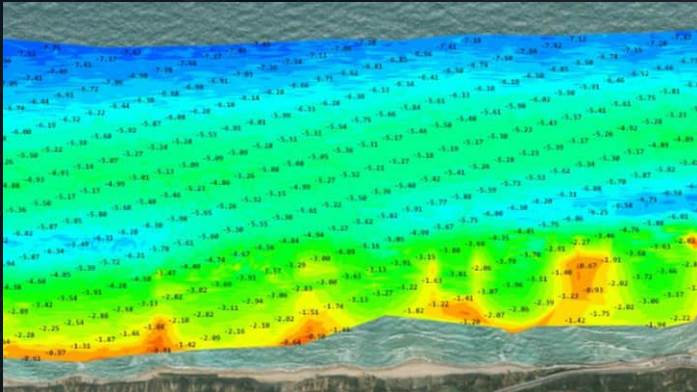



**TOPODRONE**  
 AFFORDABLE ACCURACY

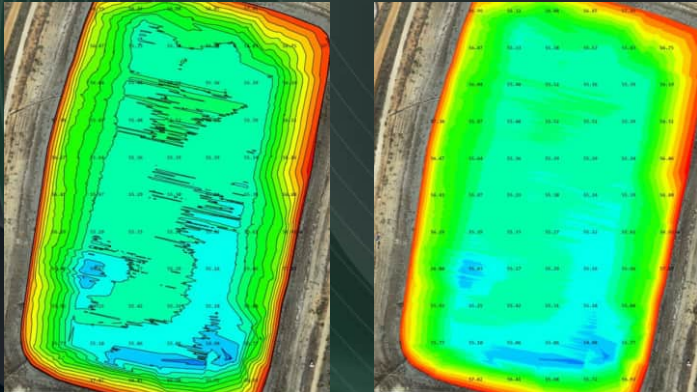


# Applications

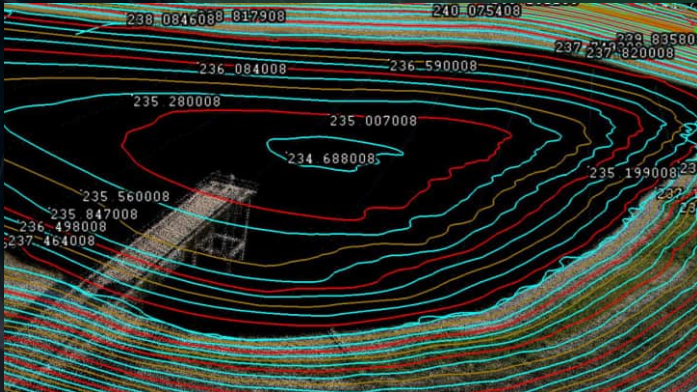
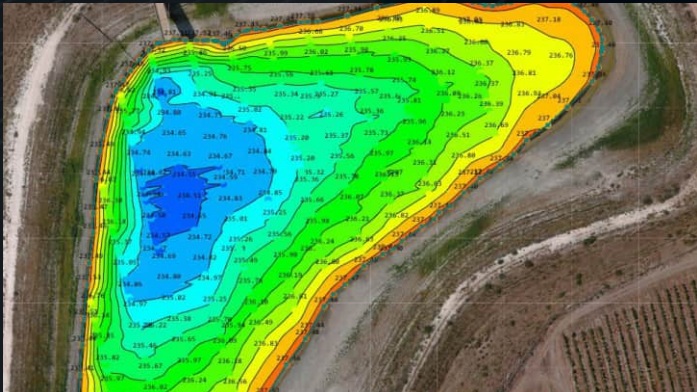
Open sea bathymetric survey up to 100m depth



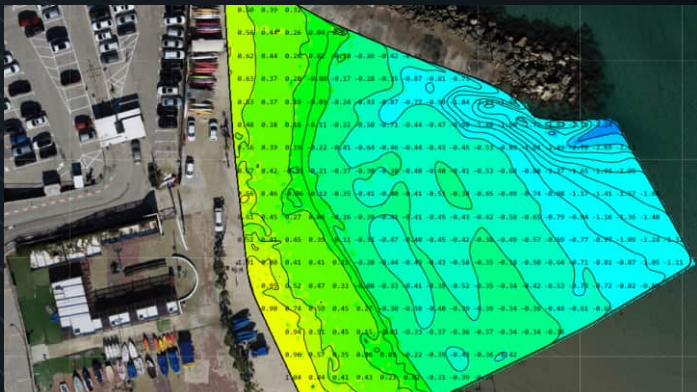
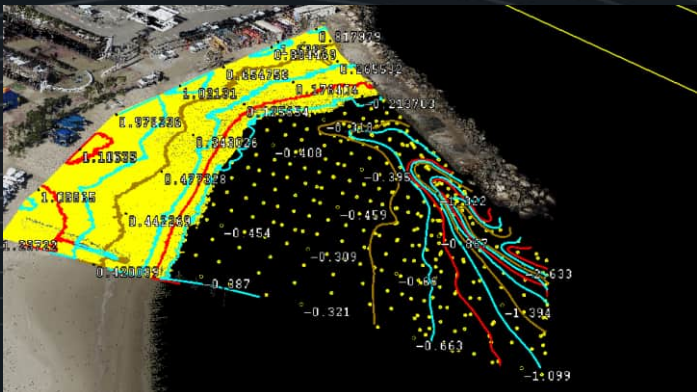
Quantity survey and calculation of sediments



Periodic maintenance survey of storage pools



Bathymetric survey in shallow water and hard access areas



Lake and rivers bathymetric survey

