

FluX Aero Bundle

High-performance GHG measurement
For UAV-mounted applications



SensorX Solutions GmbH

Qubo Business Park, Kägiswilerstrasse 17, 6060 Sarnen, Switzerland

Description

The FluX Aero module from SensorX is designed for UAV-mounted gas detection surveys. It is widely used in the area of Greenhouse Gas (GHG) monitoring, and safety monitoring campaigns.

The FluX Aero is provided as a bundle with the SPH SkyHub on-board computer for flight management and data logging. Collected gas concentration values can be accessed using your laptop in real time. Advanced reports and maps can be accessed using the DronGIS software platform, which is available in both cloud and on-premise versions.



The modules is designed to be a compatible payload for many commercially-available UAV models, such as DJI M300, DJI M350, Inspired Flight IF1200A, Harris Aerial H6, and Wispr Ranger Pro, etc.

FluX Aero



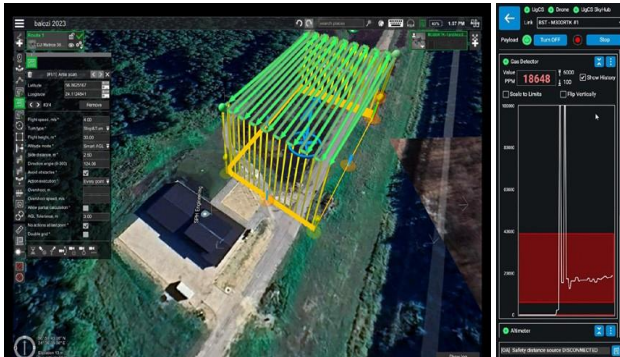
- Available for all major gases, such as methane (CH₄), carbon dioxide (CO₂) and ammonia (NH₃)
- Lightweight (as low as 0.9 kg, depending on configuration)
- Measures methane concentration accurately down to 0.5 ppm (parts per million)
- Extremely fast reacting sensor delivering concentration values at 2Hz to enable fast flying speeds
- Self-calibrating for low maintenance
- Option to generate reports on quantified emissions in g/hr

SkyHub onboard computer

- Data processing and storage unit
- Allows managing the flight, logging data, and delivering real-time sensor data to the ground
- Logs the FluX measurements in geotagged form (CSV and LOG format)
- Geotagging data involves utilizing the UAV's GPS receiver
- Equipping the drone with an RTK/PPK receiver ensures that data points will have coordinates with precision down to centimeters.



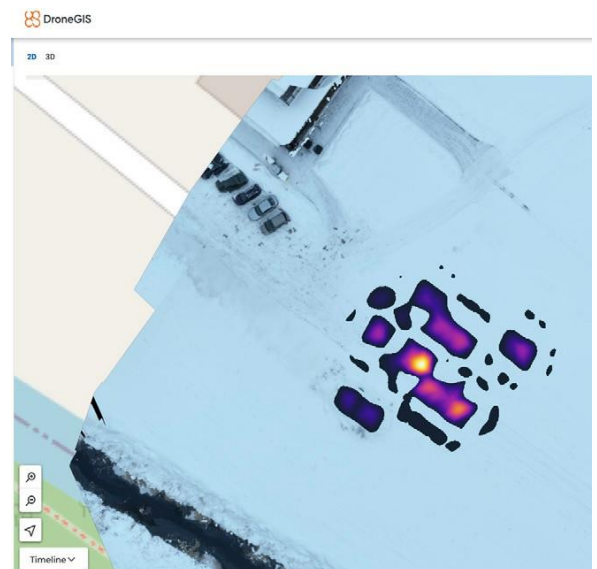
UgCS and Payload Monitor – Mission Planning and Control



- Guarantees a consistently high level of data quality
- Reduces risks for your drone and personnel
- Streams methane measurements to your laptop in real time
- Can be used offline anywhere

DroneGIS – Data Processing and Collaboration Software

- Validates acquired data, omits incorrect readings, and builds methane intensity maps
- Tracks methane dynamics over time
- Exports methane intensity maps to KML, GeoJSON, or Shape formats for integration into the existing infrastructure
- Provides collaboration capabilities for your team and stakeholders
- Share methane data and reports in one click
- Check methane detection reports on the go on your mobile device
- Available in cloud and on-premise versions



About SensorX Solutions

SensorX Solutions is leveraging the power of IIoT sensors, by combining it with technologies such as Blockchain, AI and Cloud Computing. We serve GHG monitoring markets with integrated IIoT and software solutions to fight climate change. We are proud to partner with cutting-edge sensor manufacturers worldwide, while providing our solutions to global markets.

Visit www.sensorXsolutions.com for more information.